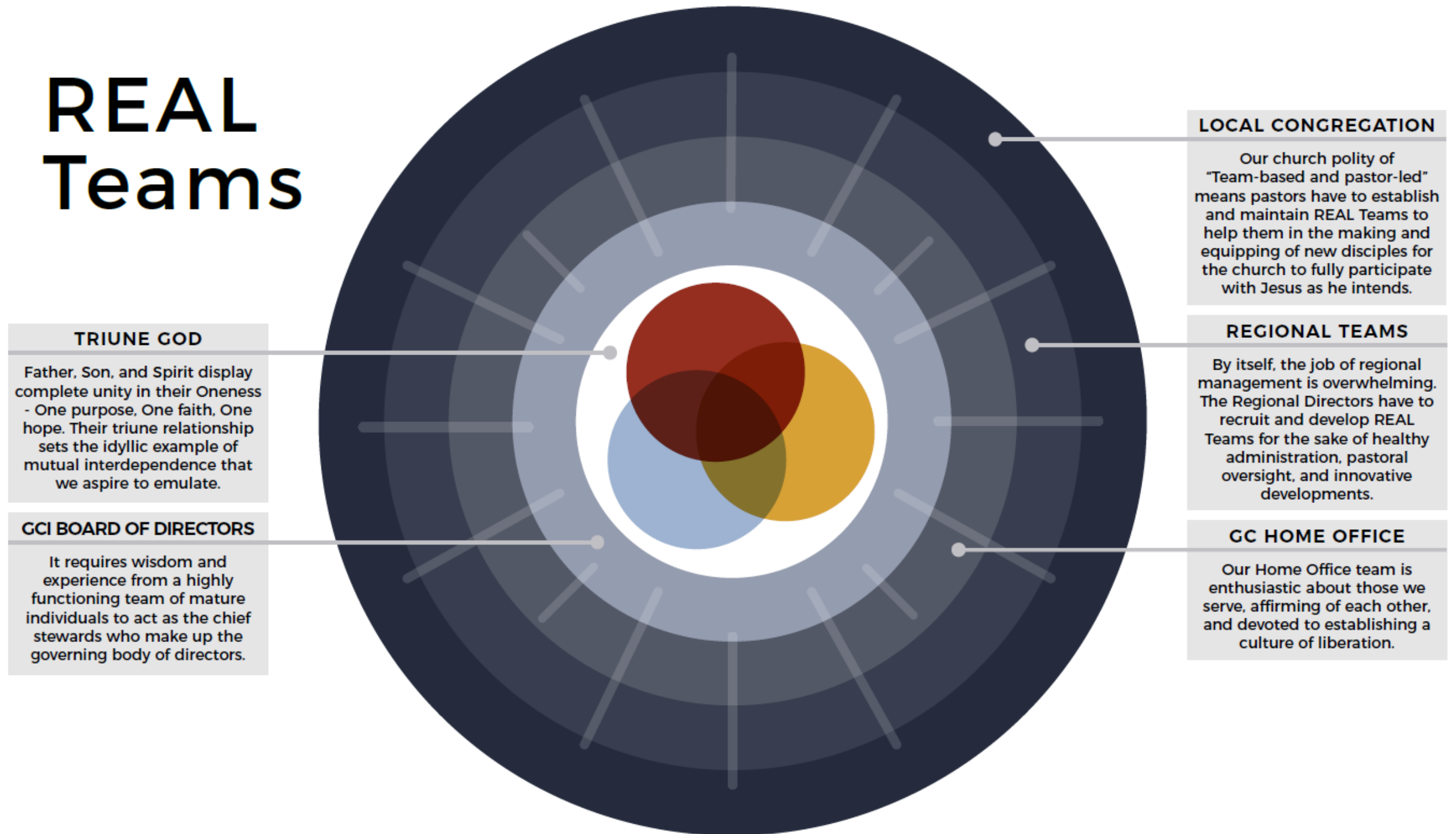


# Building R.E.A.L Teams

Grace Communion International

# REAL Teams



## TRIUNE GOD

Father, Son, and Spirit display complete unity in their Oneness - One purpose, One faith, One hope. Their triune relationship sets the idyllic example of mutual interdependence that we aspire to emulate.

## GCI BOARD OF DIRECTORS

It requires wisdom and experience from a highly functioning team of mature individuals to act as the chief stewards who make up the governing body of directors.

## LOCAL CONGREGATION

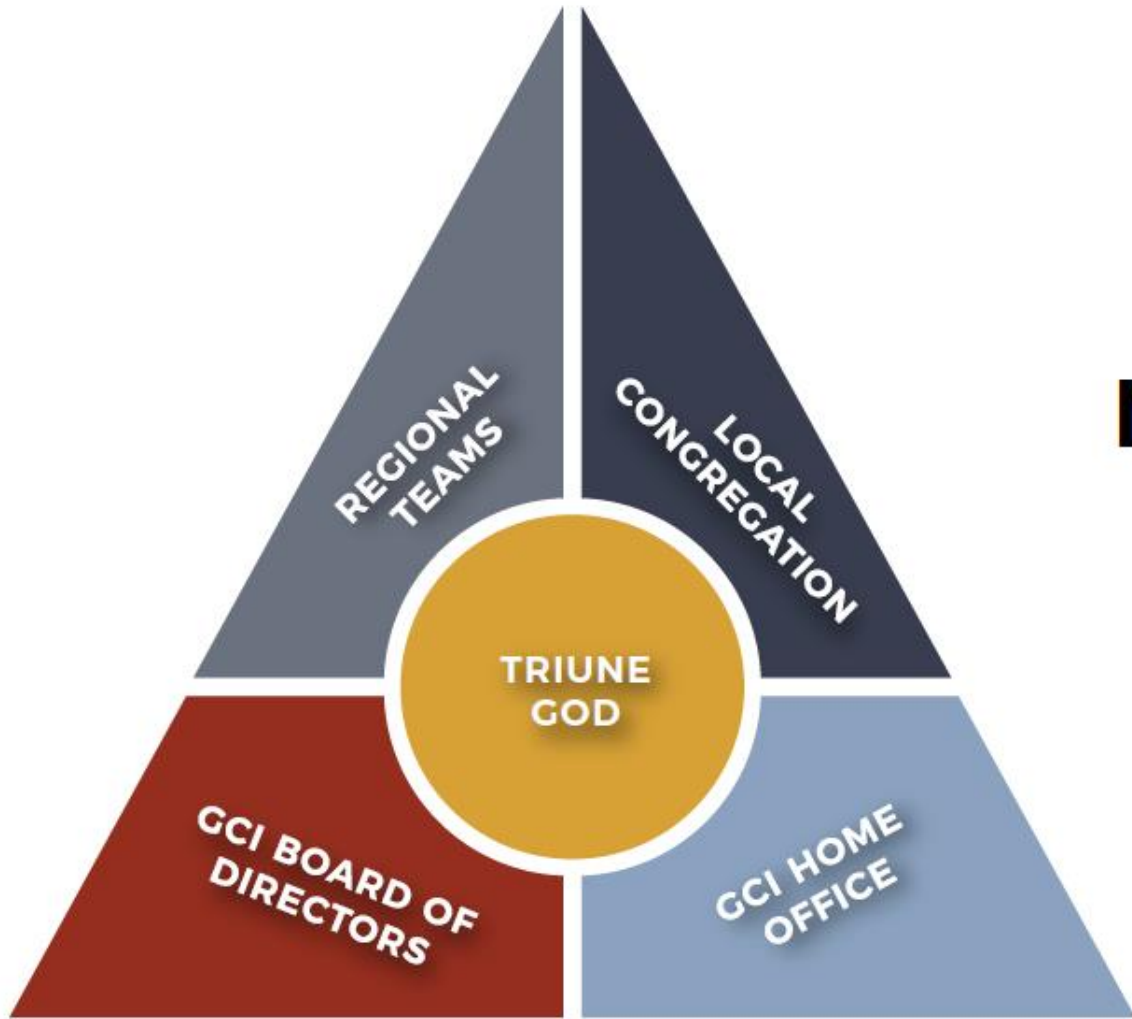
Our church polity of "Team-based and pastor-led" means pastors have to establish and maintain REAL Teams to help them in the making and equipping of new disciples for the church to fully participate with Jesus as he intends.

## REGIONAL TEAMS

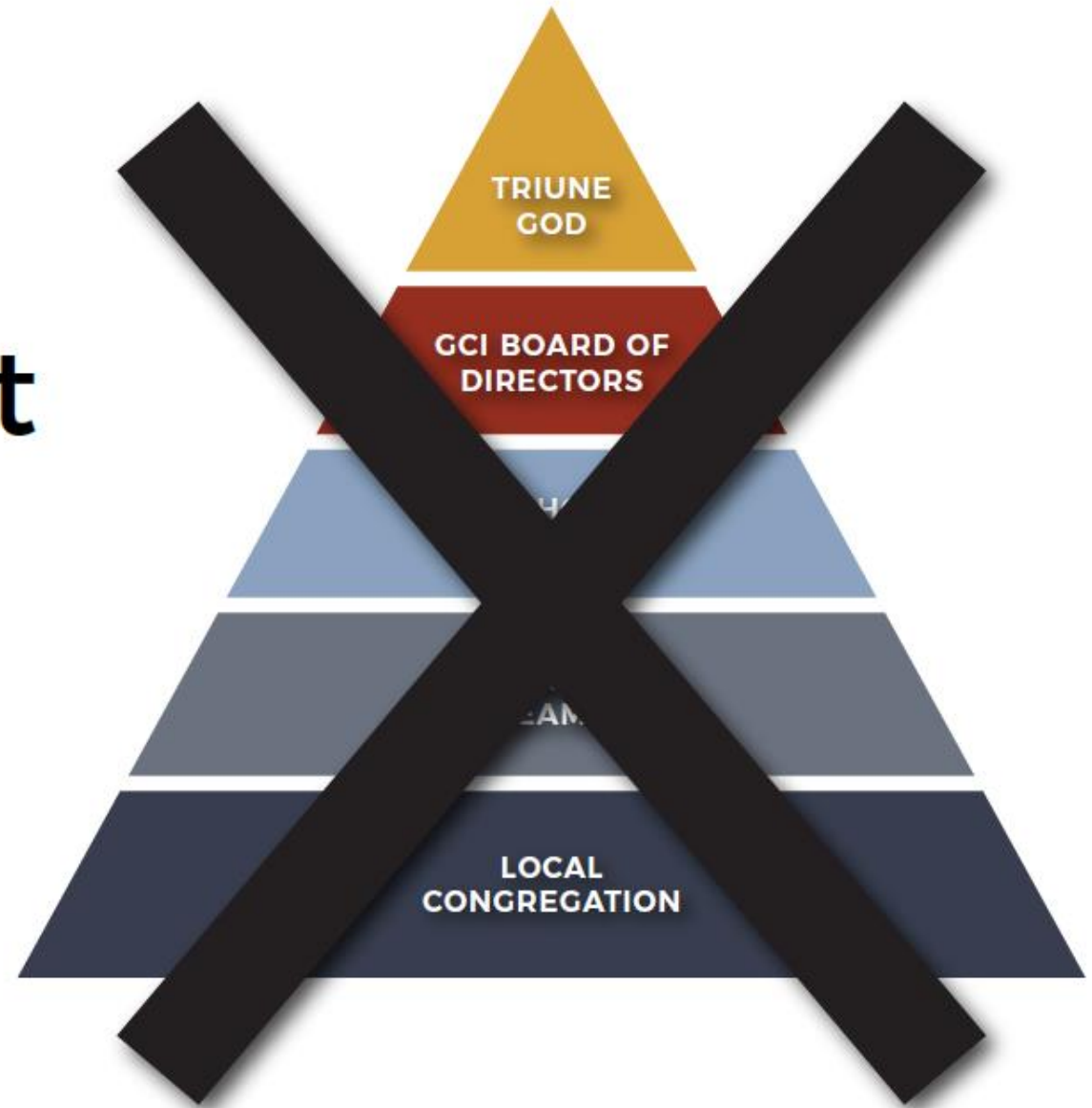
By itself, the job of regional management is overwhelming. The Regional Directors have to recruit and develop REAL Teams for the sake of healthy administration, pastoral oversight, and innovative developments.

## GC HOME OFFICE

Our Home Office team is enthusiastic about those we serve, affirming of each other, and devoted to establishing a culture of liberation.



not



# Relationships Matter

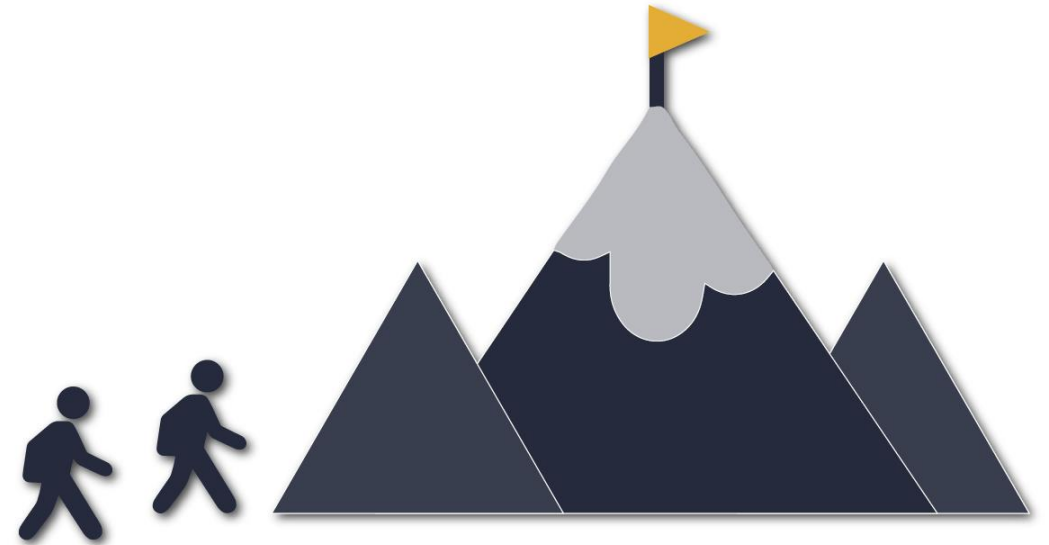
- **Relationally connected to Jesus and to one another**

RELATIONALLY CONNECTED



- Participation requires energy and passion

ENTHUSIASTICALLY ENGAGED



Enthusiasm Matters

# High Support & High Challenge

- **Affirmation** means that we speak the truth in love
- **Love is secure,** and honesty is sincere.

**AFFIRMING**



**GRACE COMMUNION**  
INTERNATIONAL

- Liberators provide opportunities for emerging leaders and appropriately empower

LIBERATING LEADERS



A Culture of Liberation